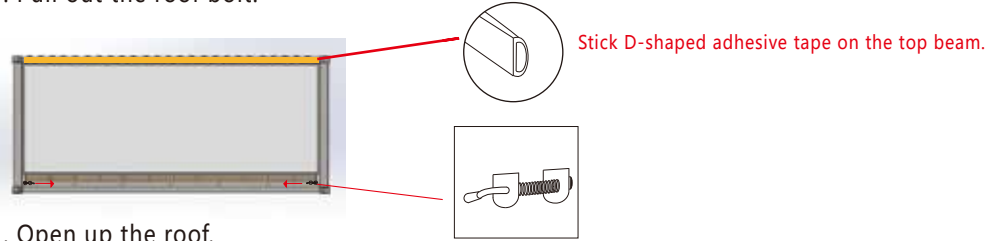




Instructions for installation of expansion box

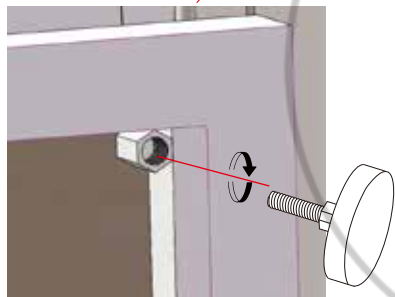
1 . Pull out the roof bolt.



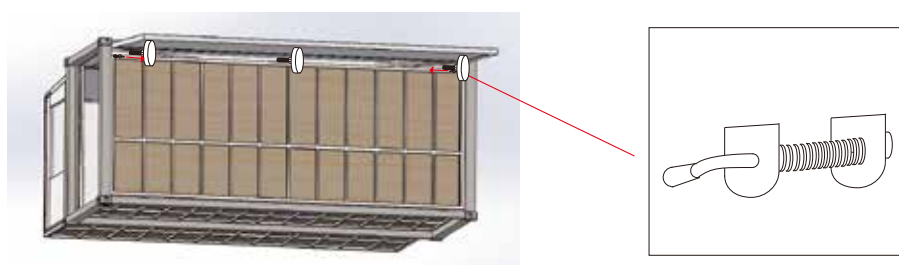
2 . Open up the roof.



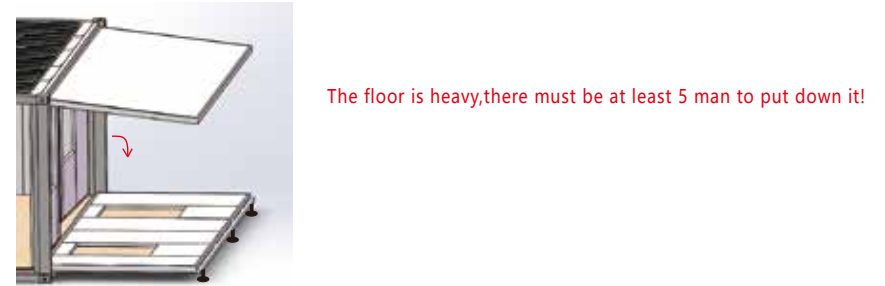
3 . Assemble the leg support.



4 . Pull out the floor bolt.



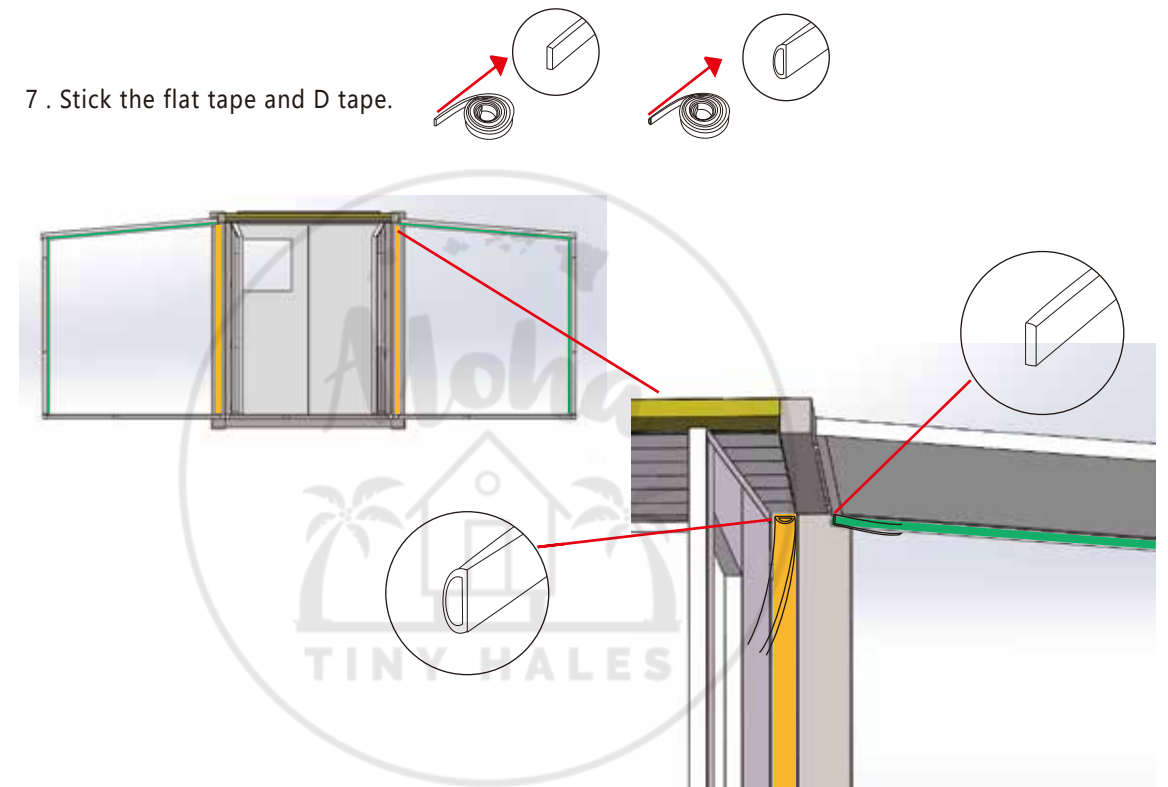
5 . Put down the floor.



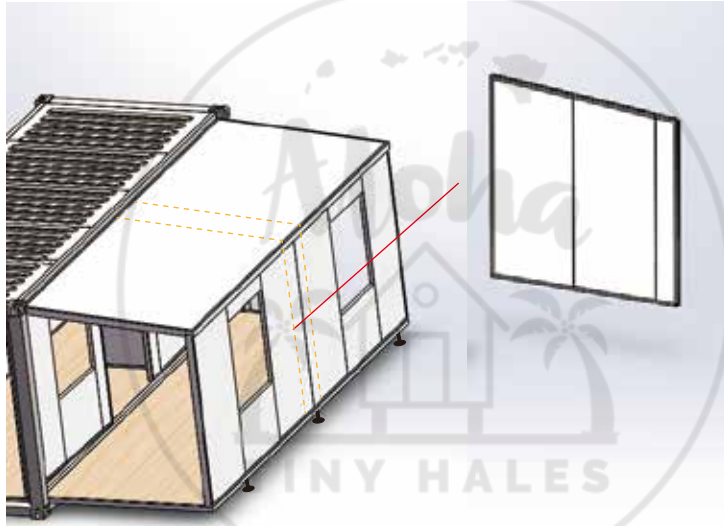
6 . Lift up Wall-B.



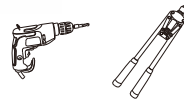
7 . Stick the flat tape and D tape.



8 . Put in the partition wall.

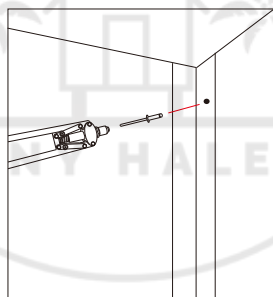
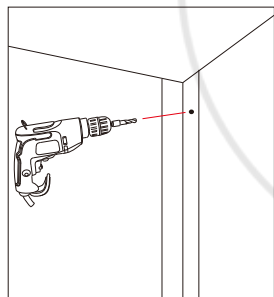
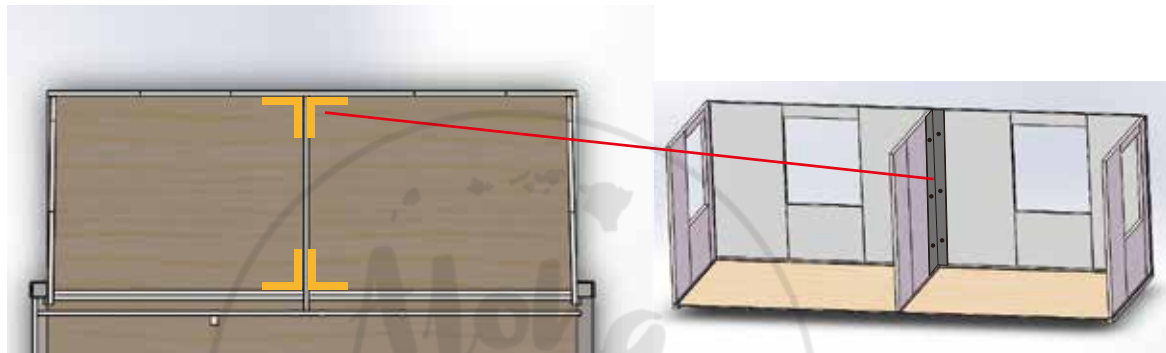


9 . Fixed the partition wall.



Use 4 L-shape corner covering to fix the partition wall;

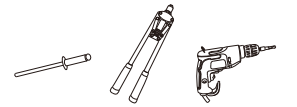
Use at least 3 rivets on each side of the L-shape corner covering to fix the corner covering!



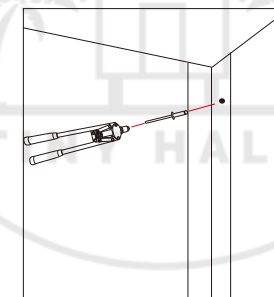
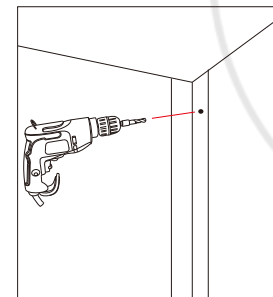
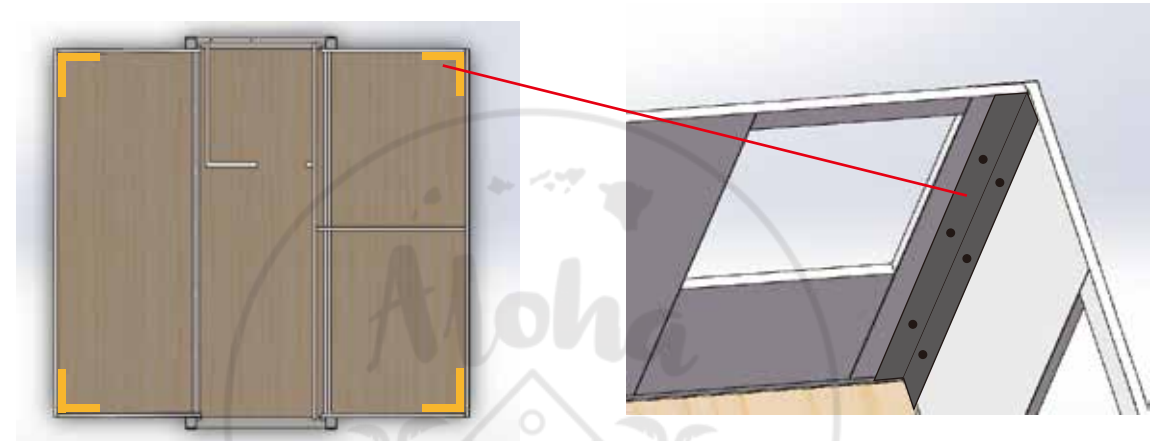
10 . Open the Wall-A , Wall-C.



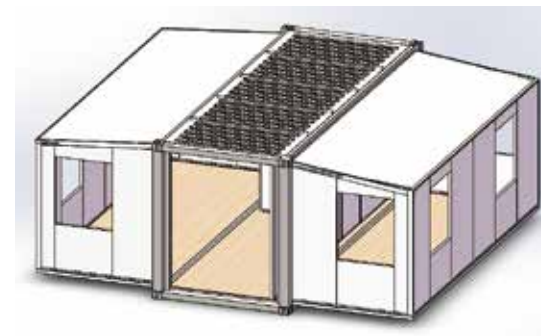
11 .Use L-shape corner covering to fix Wall-A & Wall-C / Wall -1 & Wall-3.



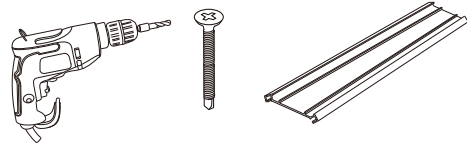
Use at least 3 rivets on each side of the L-shape corner covering to fix the corner covering!



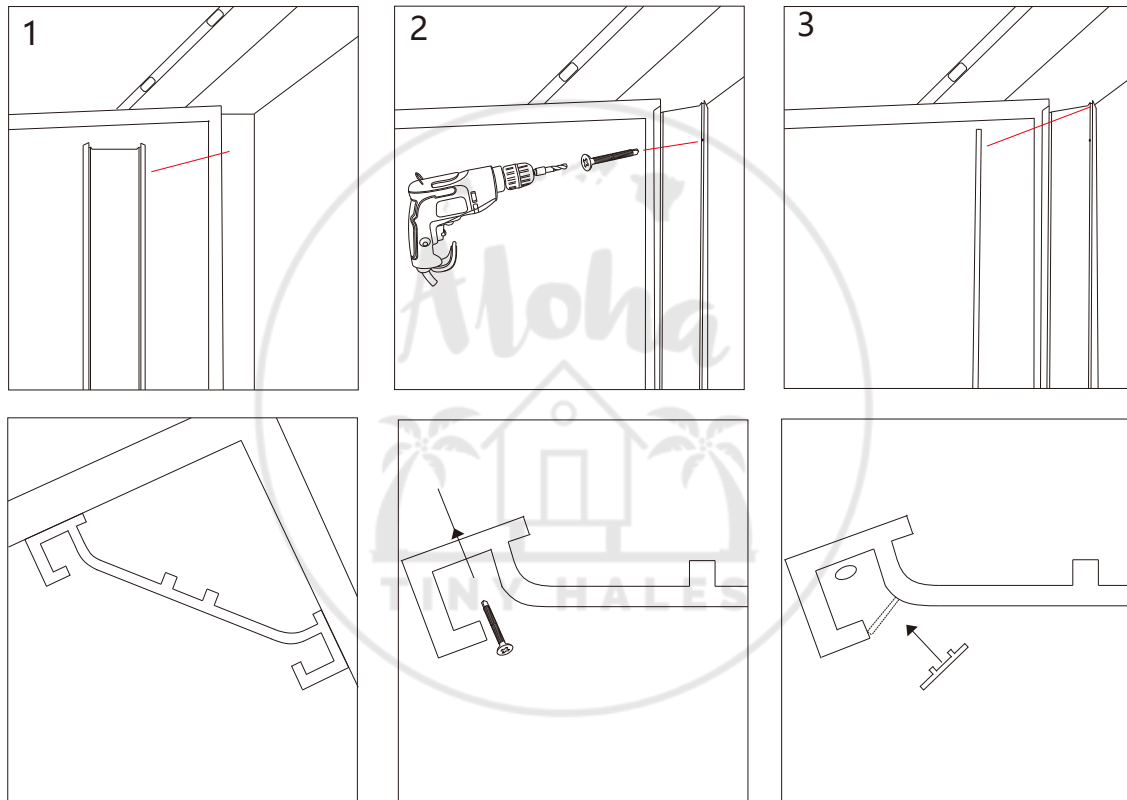
12 . Open and assemble the other side by the same way.



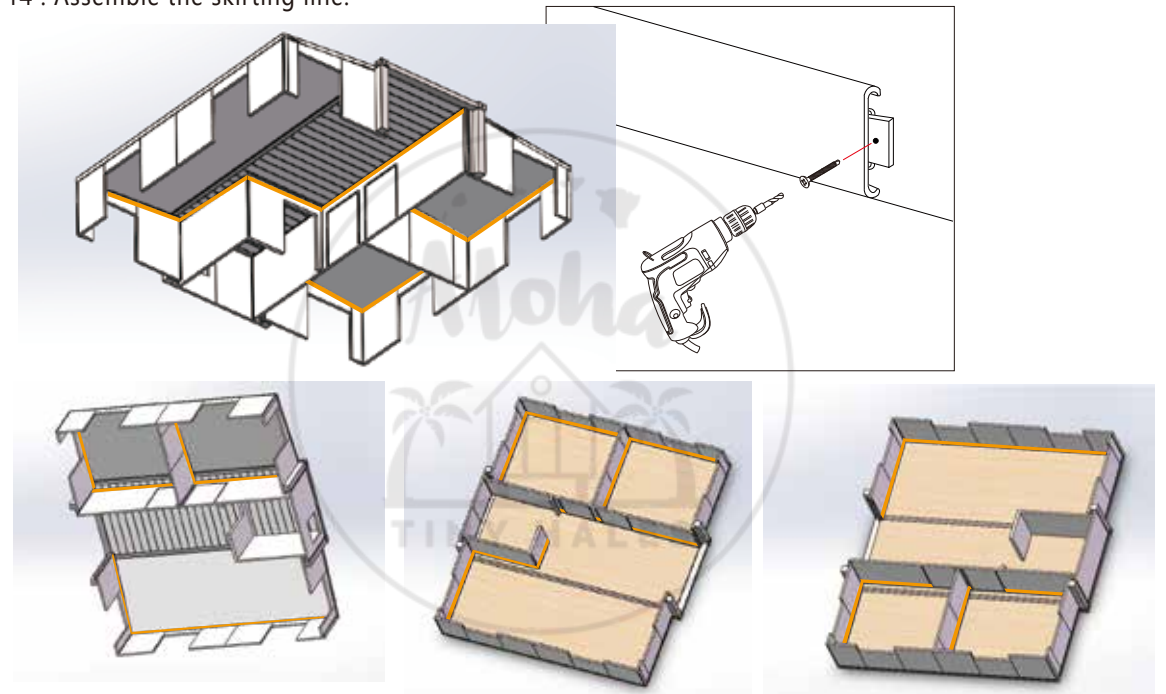
13 . Assemble the PVC corner covering.



Measure the height and cut the corner covering into proper size!

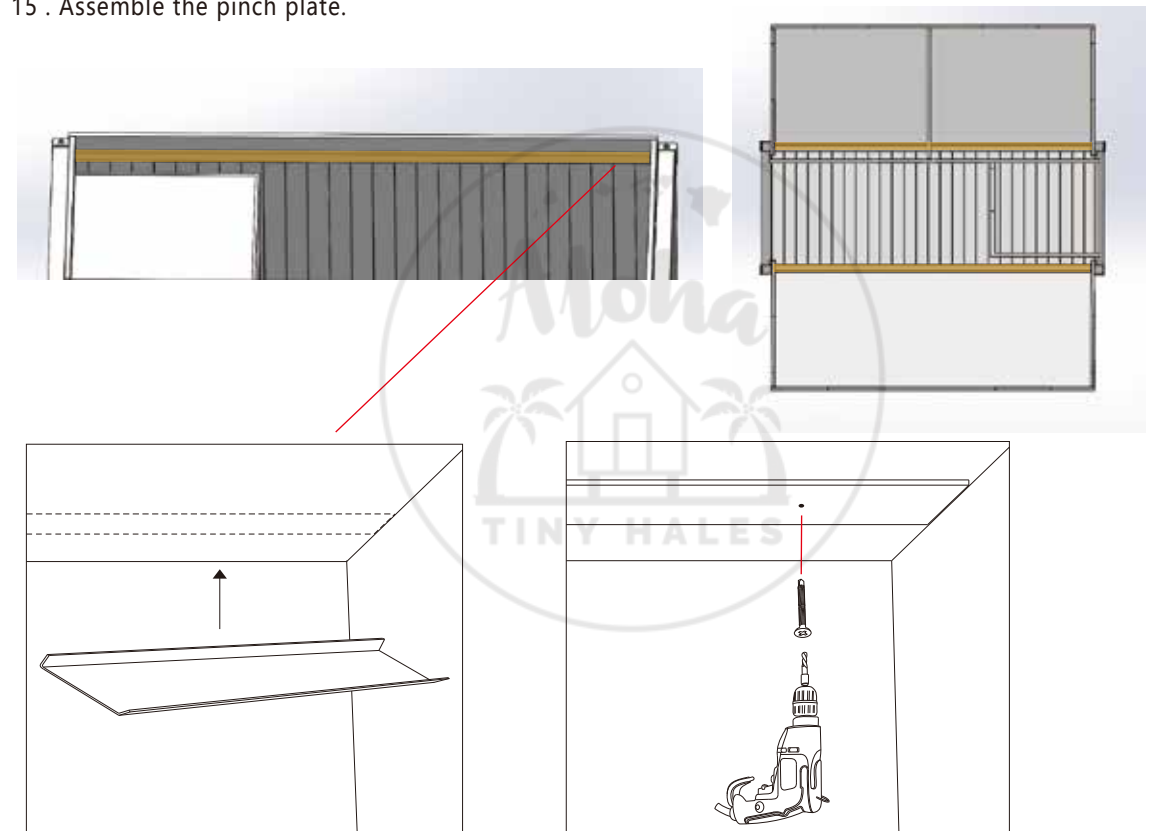


14 . Assemble the skirting line.

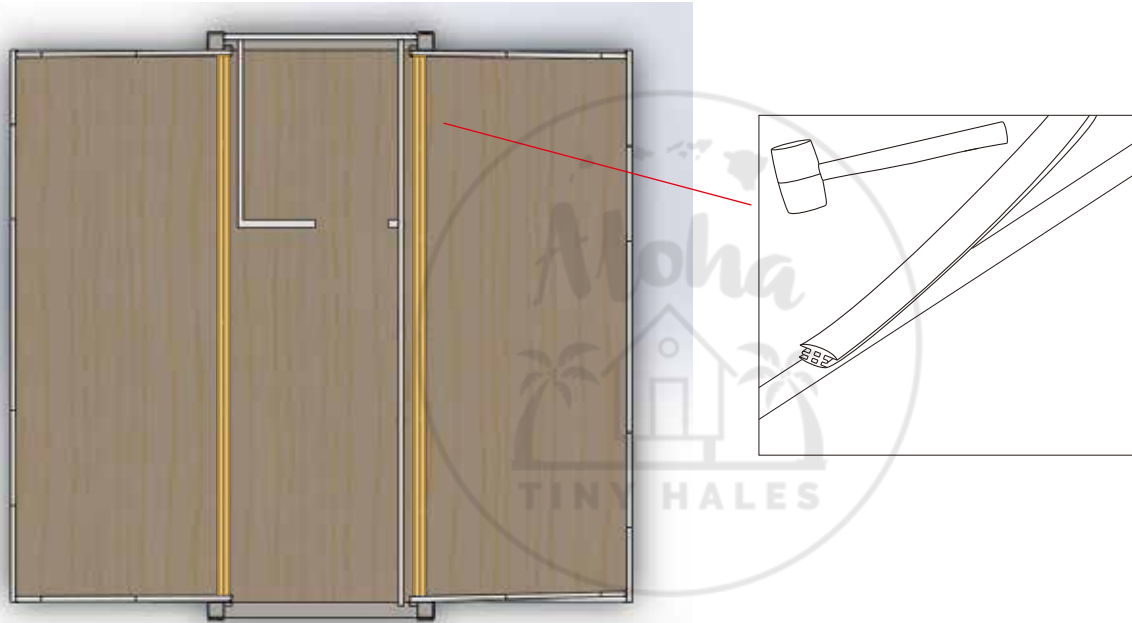


NOTICE : For the corner fixed buckle, the narrow side adjoins the wall!

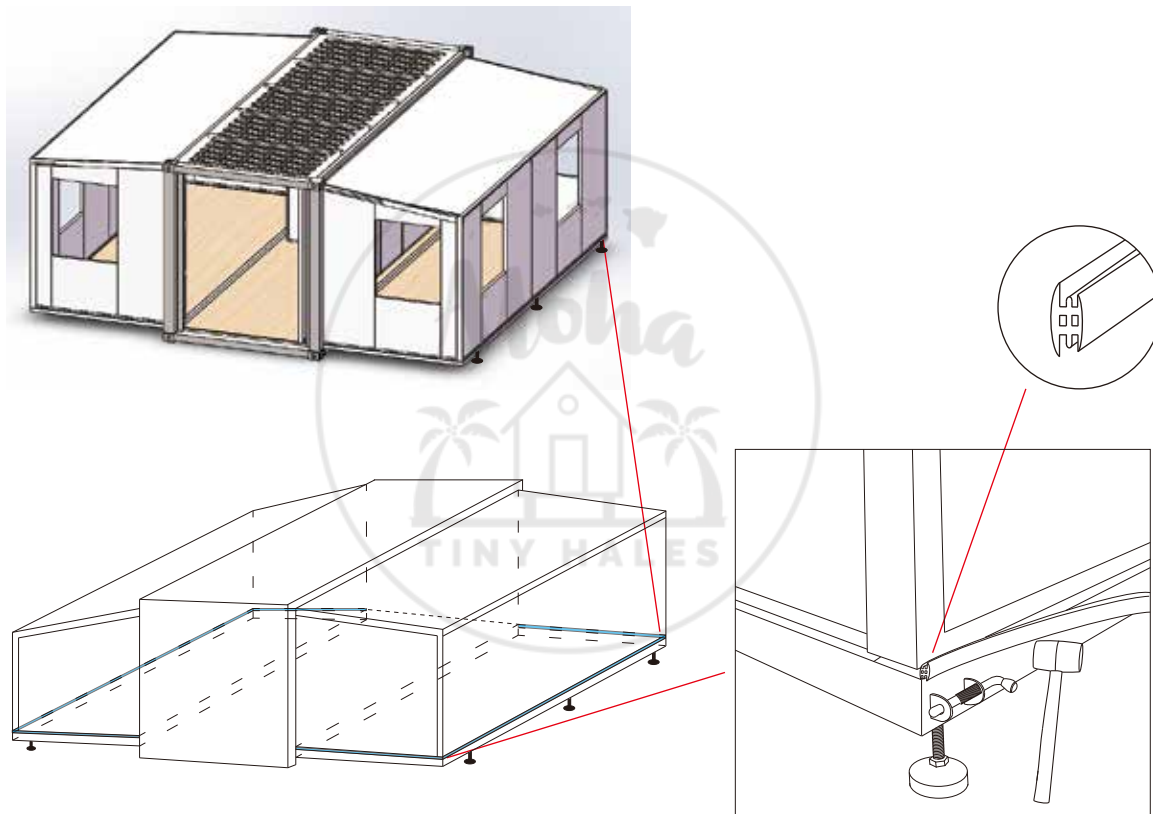
15 . Assemble the pinch plate.



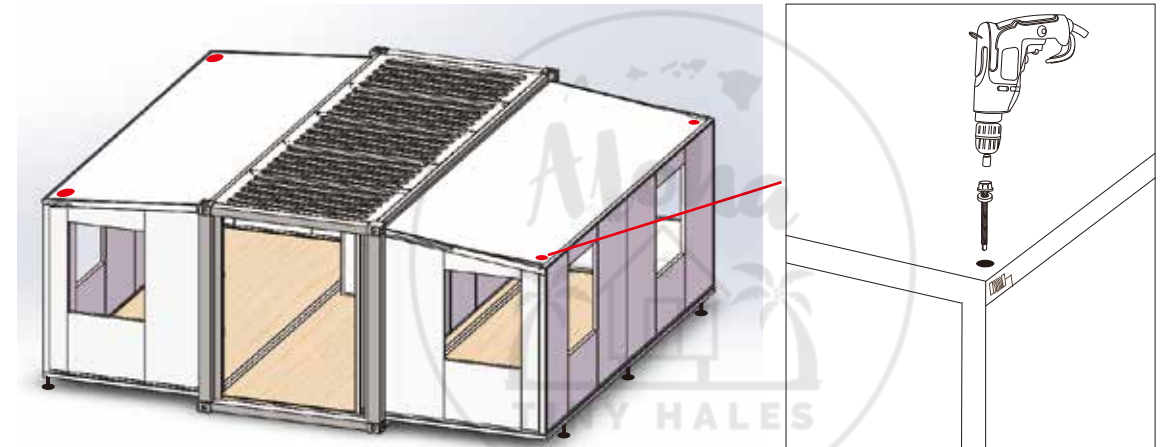
16 . Assemble the T tape inside the container house.



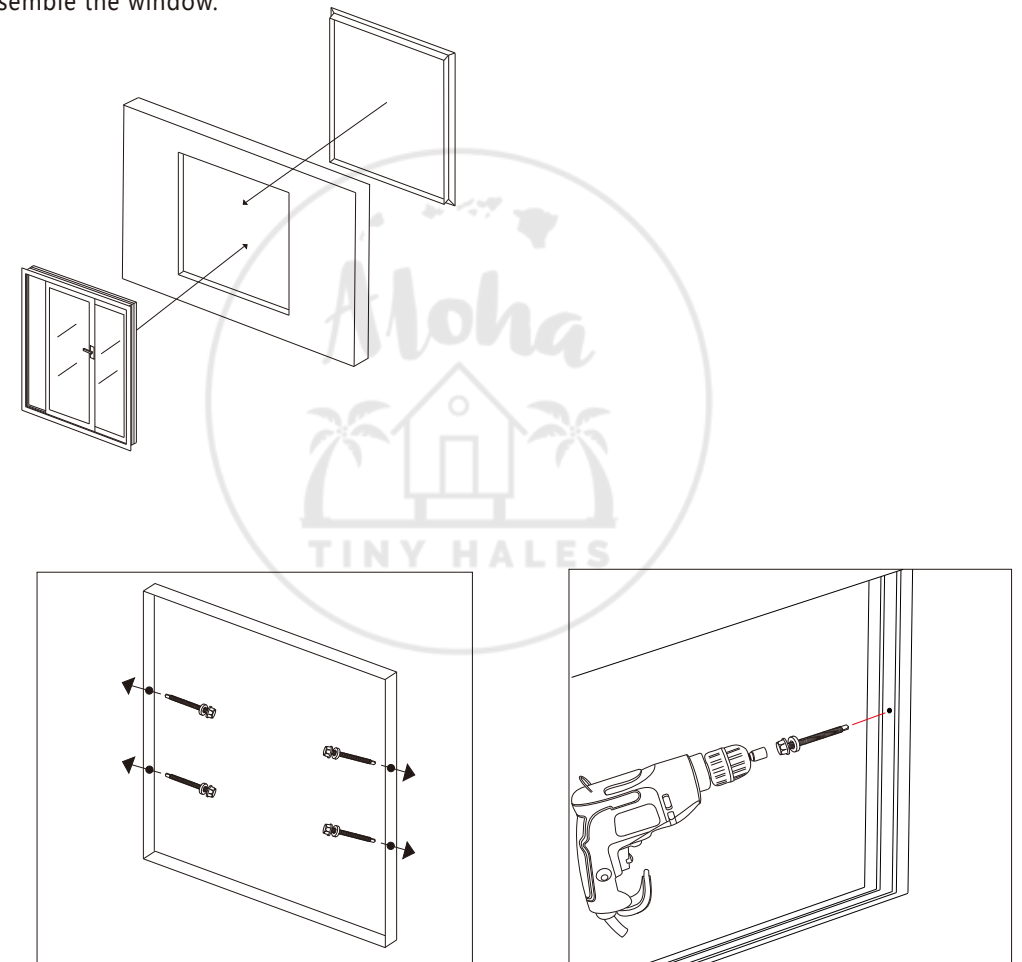
17 . Assemble the T tape outside the container house.



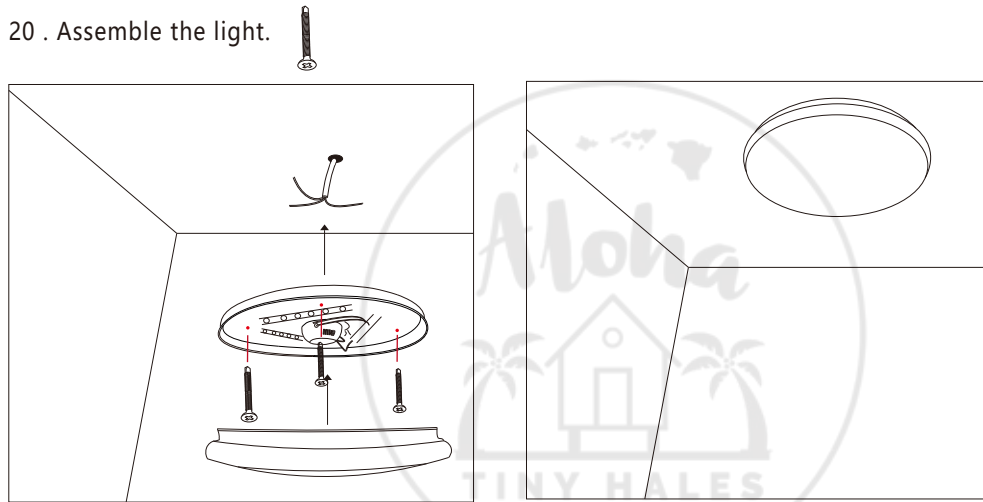
18 . Fixed container house roof corner.



19 . Assemble the window.

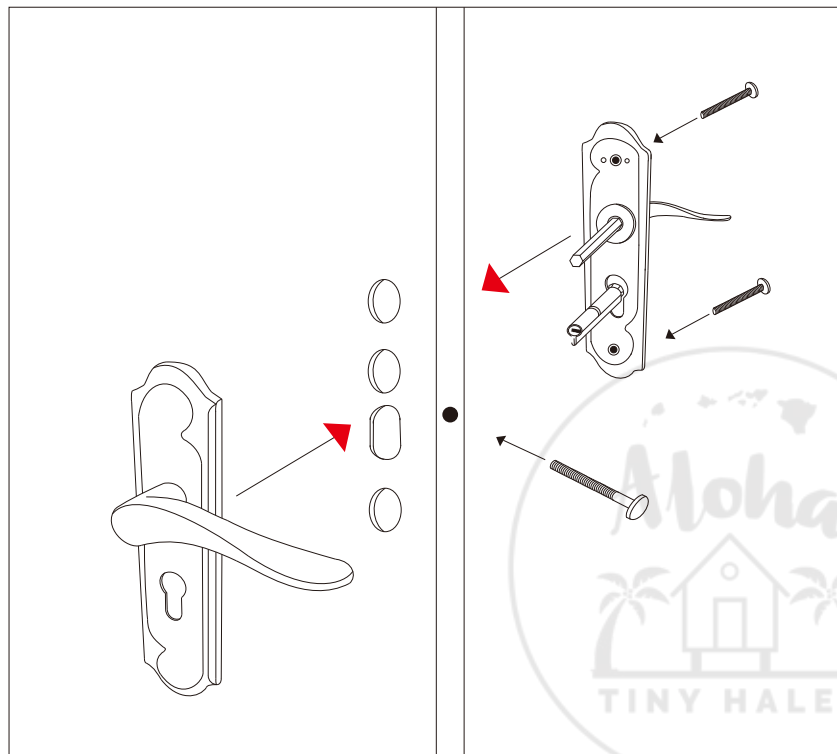


20 . Assemble the light.

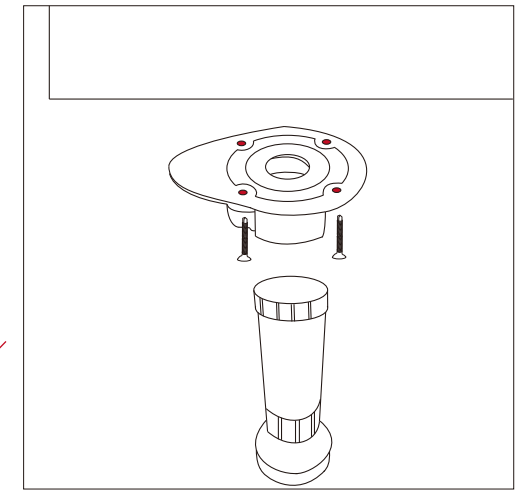
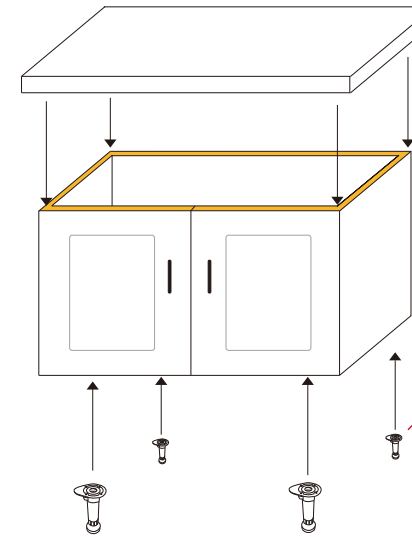


1. Use 3 Ear Tapping Screws to fix the lampholder with the roof.
2. Connect the roof wire with the lamp wire. Hold with insulating tape.
3. Fitted with lamp covering.

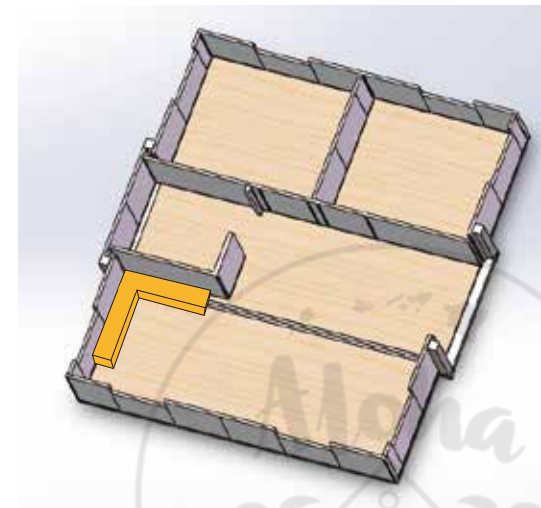
21 . Assemble the lock.



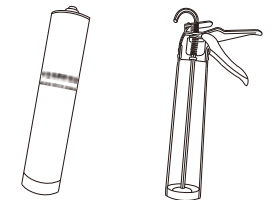
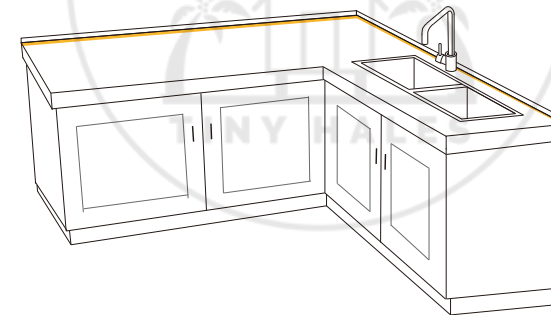
22 . Assemble the cupboard.



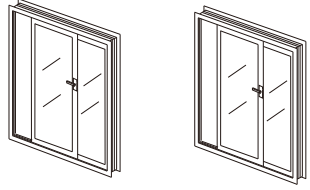
- Fix the 4 bases to the bottom of the cabinet by nails, and then put the four legs into the bottom seat. Make the cabinet level by adjusting the legs.



- Apply the sealant on the yellow area to fix the marble countertop and breakwater. Sealant should wait for 24 hours to dry and fixed



1.



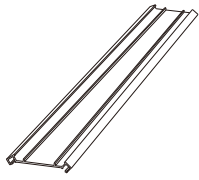
1-1 window
930*1110mm
×9 (unit)

1-2 930*800mm
×1 (unit)

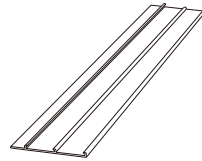
2.



2-1 阴角线
50*50mm
×16 (strip)

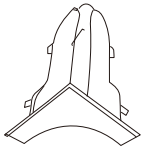


2-2 PVC Corner Covering
930*800mm
×4 (strip)

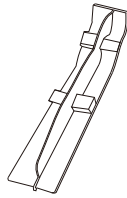


2-3 PVC Corner Covering
75*2000mm
×60 (strip)

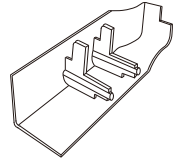
3.



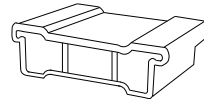
3-1 PVC corner Connection Buckle
×32 (unit)



3-2 PVC corner Connection Buckle
×28 (unit)



3-3 PVC Corner end Buckle
×32 (unit)



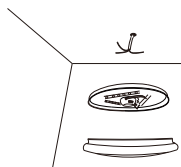
3-4 PVC Corner Fixed Buckle
×28 (unit)

4.



4-1 L cabinet
(1900+2200) *550*900mm
×1 (unit)

5.

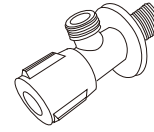


5-1 Light Lamp shade + lamp tube
15W LED
×11 (unit)

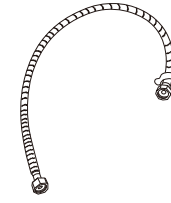
6.



6-1 Industrial plug
Triple core 3-wire
×1 (unit)

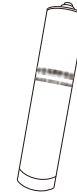


6-2 Valve
Φ20mm
×2 (unit)

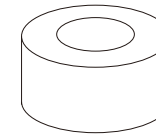


6-3 High Pressure Hose
500mm
×2 (strip)

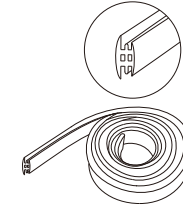
7.



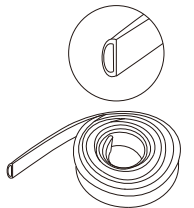
7-1 weather proofing sealant unfolding roof and roof
×10 (bottle)



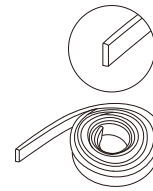
7-2 Waterproof Tape
80#
L=40 meters
×4 (roll)



7-3 T Tape
For gap Try to choose white
L=70meters
×1 (roll)



7-4 D Tape
For gap Try to choose white
L=22 meters
×1 (roll)

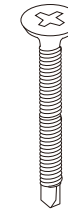


(roll)
7-5 Flat tape
Slants thin
L=22meters
×1 (roll)

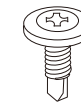
8.



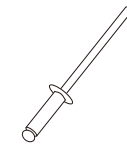
8-1 Phillips Screwdriver Head
×1 (unit)



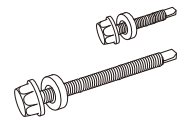
8-2 Ear Tapping Screws
Φ4.2 L=50mm
200 units
×1 (box)



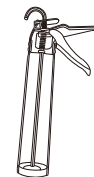
8-3 Big Cap Self-tapping Nail
Φ4.2 L=27mm
200 units
×1 (box)



8-4 Rivet
Φ4.8 L=17mm
200 units
×1 (box)



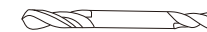
8-5 Self Tapping Nail
Φ4.2 L=25mm / L=75mm
200 units
×2 (box)



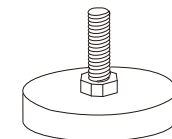
8-6 Glue Gun
14 (unit)



8-7 Hexagon Socket
M8
1 (unit)



8-8 Drill
Φ4.2
1 (unit)



8-9 Stabilizer Blade
M16, L=175mm
12 (unit)