



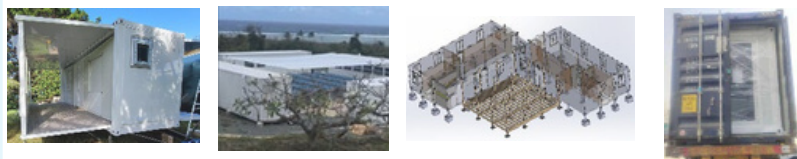
ALOHA TINY HALE'S LLC

Capability Statement

alohatinyhales.com

ALOHA TINY HALE'S LLC specializes in the production of off-grid expandable tiny homes. The company manages all aspects of the project, including manufacturing, transportation, installation, and utility connections. With a team of skilled workers and a robust HR department, the company ensures the successful execution of each project.

Core Competencies



Expandables:

Aloha Tiny Hales provides sustainable, off-grid, and affordable housing solutions designed for individuals, families, and communities seeking eco-friendly alternatives to traditional construction. Our innovative approach combines renewable energy, waste reduction, and the use of locally sourced materials to create durable, comfortable, and environmentally responsible living spaces.

Off-Grid Power Systems:

For over eight years, Aloha Tiny Hales has been designing and installing reliable off-grid power systems throughout the Hawaiian Islands. We are proud to be the leading provider of off-grid modular homes in the region, combining sustainability with proven performance.

Electric Vehicle Conversions:

Maximize the benefits of your off-grid power system with our electric vehicle (EV) conversions. Enjoy the convenience of charging your vehicle at home—ready to go every morning while reducing your fuel costs, emissions, and dependence on the grid.

Differentiators

What sets Aloha Tiny Hales apart is our combination of superior quality construction and rapid installation:

✓ Turnkey Installation Within 1 Week

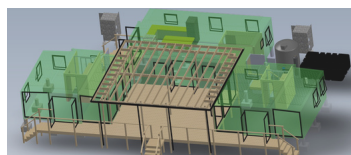
From port arrival to on-site delivery and full setup, each home—whether 20', 30', or 40'—can be installed and move-in ready in as little as one week. Our streamlined process ensures rapid deployment without compromising quality or comfort.

✓ Minimal Site Disruption

Our homes arrive folded inside standard 40' containers, allowing for easy transport without the need for road closures. Once on-site, units are unfolded directly onto post and pier blocks, minimizing environmental and community impact.

✓ Flexible, Expandable Designs

Our homes expand to 20'x22', 20'x30', or 20'x40', complete with all amenities pre-installed — including kitchens, bathrooms and furnishings — ensuring a truly turnkey housing solution.



Past Performance

Aloha Tiny Hales, LLC has successfully manufactured and installed over **50 off-grid tiny homes** across Maui over the past **8 years**, establishing itself as the top provider of expandable modular homes on the island.

Primary NAICS & PSC Codes

321992	Manufacturing prefabricated wood buildings
332311	Manufacturing prefabricated steel buildings
238990	Other Specialty Trade Contractors
321991	Manufactured Home (Mobile Home) Manufacturing
237130	Solar power structure construction
238990	Manufactured home set up and tie-down work
238210	Solar panel installation
221114	Solar Electric Power Generation
335910	Battery packs, and related components
541330	Engineering Services
R425	Engineering and Technical Services
Y1FZ	Construction of other residential buildings
6117	Solar electric power systems

John MacDonald

Government POC

CAGE: 6SXM0

UEI: QM6HQ4DAKX43

Phone: 1-808-866-6968

E-mail: alohatinyhales@gmail.com

Address: 250 Imi Kala Road #3041, Wailuku, HI 96793